

10 steps to **streamlining** your **localisation process**

How we **halved the production time** for a
28-language documentation suite

start

**single file documents
(e.g. word)**

goal

↓ **time** | ↓ **effort** | ↓ **cost**

the scenario

Promethean®



- **interactive panels**
- **seasonal purchasing cycle**
- **154 countries | 28 languages**
- **recognise need to change**

initial improvements

reduce text

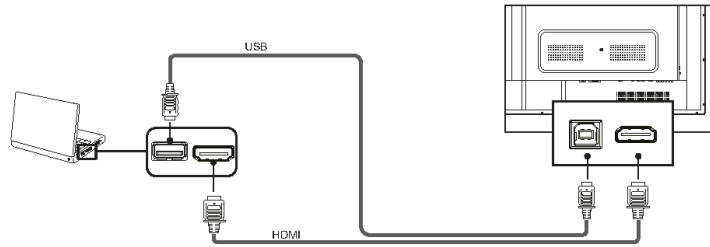
only translate necessary text

start global – adapt to local

quick install guides

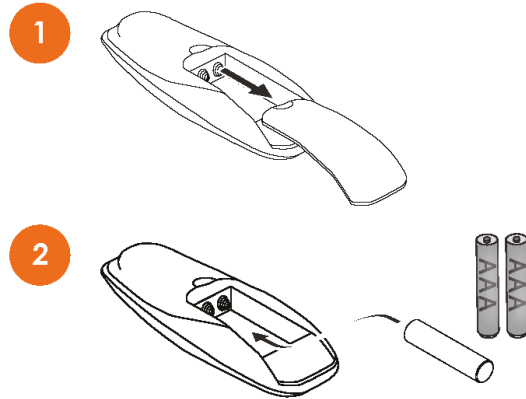
Connections

توصيلات • 连接 • 連接 • Připojení • Forbindelser • Verbindungen • Ühendused • Yhteydet • Connexions • Anschlüsse • Kapcsolatok • Sambungan • Connessioni • 接続 • Байланыстар • Savienojumi • Jungtys • Sambungan • Tilkoblinger • Połączenia • Ligações • Подключения • Conexiones • Anslutningar • การเชื่อมต่อ • Bağlantılar • Көтінді



Installing batteries

تثبيت البطاريات • 正在安装电池 • 安裝電池 • Instalace baterií • Installation of batteries • Batterijen plaatsen • Patareide paigaldamine • Asennetaan paristot • Mise en place des piles • Einlegen der Akkus • Akkumulátorok telepítése • Memasang baterai • Installazione delle batterie • 電池のセット • Батареяларды орнату • Bateriju ievietošana • Bateriju įdėjimas • Memasang bateri • Montere batterie • Instalacja baterii • Instalar as pilhas • Установка батарей • Instalación de pilas • Instalarer batterier • การใส่ถ่านไฟฉาย • Pillerin yöklenmesi • Láp dāt pin



Compliance

التوافق • 符合性 • 符合規範 • Dodržování předpisů • Godkendelse • Naleving • Vastavus • Yhteensopivuus • Conformité • Konformität • Megfelelőség • Kepatuhan • Conformità • コンプライアンス • Сәйкестік • Atbilstība • Atīstītis • Pamatuhan • Samsvar • Zgodność • Conformidade • Соответствие стандартам • Cumplimento de normativas • Eftferlevnad • การปฏิบัติตามข้อกำหนด • Uyumluluk • Sirtuân thũ

Compliance

United States of America

NOTE: VTP-65 and VTP2-75-4K have been tested and found to comply with the limits for a Class B digital device, pursuant to part 15 of the FCC Rules.

These limits are designed to provide reasonable protection against harmful interference when the equipment is operated in a commercial environment.

This equipment generates, uses, and can radiate radio frequency energy and, if not installed and used in accordance with the instruction manual, may cause harmful interference to radio communications.

Operation of this equipment in a residential area is likely to cause harmful interference in which case the user will be required to correct the interference at his own expense.

Do not make any changes or modifications to the equipment.

Canada

VTP-65 and VTP2-75-4K Class B digital apparatus complies with Canadian ICES-003.

VTP-65 and VTP2-75-4K appareil numérique de la classe B est conforme à la norme NMB-003 du Canada.

Europe

Promethean hereby declare that VTP-65 and VTP2-75-4K are in compliance with the Low Voltage Directive 2014/35/EU and the Electromagnetic Compatibility Directive 2014/30/EU.

VTP-65 and VTP2-75-4K meet the following compliance standards: EN 55032, EN 55024 and EN 60950-1.

Full Declaration of Conformities can be found by searching for TP-2053 (VTP-65) and TP-2076 (VTP2-75-4K) at support.prometheanworld.com

VTP-65 and VTP2-75-4K are Class B products.

Waste Electrical and Electronic Equipment (WEEE)

For more information concerning the correct disposal of these products, please contact your Promethean reseller.



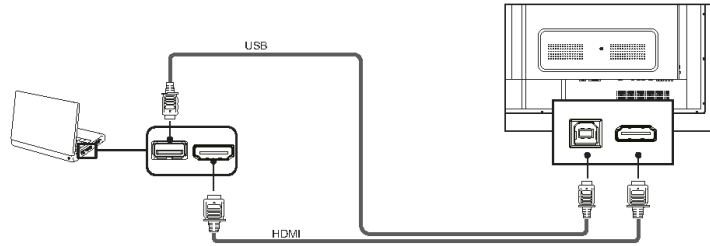
more images

replace text with images

i.e. Ikea style

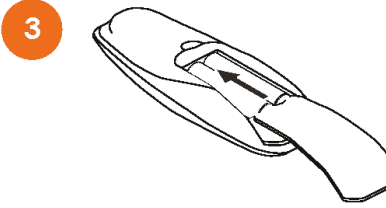
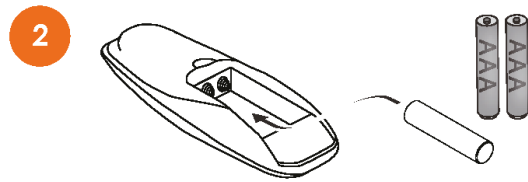
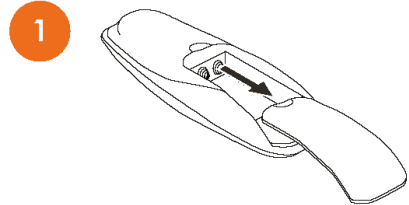
Connections

توصيلات • 连接 • 連接 • Připojení • Forbindelser • Verbindungen • Ühendused • Yhteydet • Connexions • Anschlüsse • Kapcsolatok • Sambungan • Connessioni • 接続 • Байланыстар • Savienojumi • Jungtys • Sambungan • Tilkoblinger • Potáçzenia • Ligações • Подключения • Conexiones • Anslutningar • การเชื่อมต่อ • Bağlantılar • Көтнөй



Installing batteries

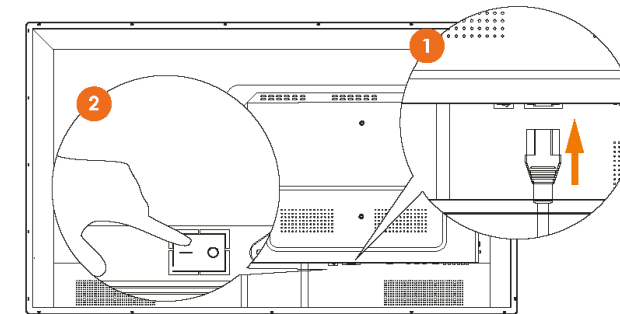
تثبيت البطاريات • 正在安装电池 • 安裝電池 • Instalace baterií • Installation of batteries • Batterijen plaatsen • Patareide paigaldamine • Asennetaan paristot • Mise en place des piles • Einlegen der Akkus • Akkumulátorok telepítése • Memasang baterai • Installazione delle batterie • 電池のセット • Батареяларды орнату • Bateriju ievietošana • Bateriju įdėjimas • Memasang bateri • Montere batterier • Instalacja baterii • Instalar as pilhas • Установка батарей • Instalación de pilas • Instalarer batterier • การใส่ถ่านไฟฉาย • Pillerin yöklenmesi • Láp dāt pin



Switching on

التشغيل • 开机 • 開啟 • Zapnúť • Täand • Inschakelen • Sisselülitamine • Virran kytkeminen • Activation • Einschalten • Bekapsolås • Menyalakan • Accensione • スイッチオン • Işə qoçu • Ieslēģšana • Įjungimas • Menghidupkan • Slå på • Włączanie • Ligar • Переключение • Encendido • Slå på • 開機 • Açma • Bật nguồn

VTP-65



fewer docs

fewer items to process
i.e. multi-lingual guides

Table of contents

جدول المحتويات • 目录 • 目錄 • Obsah • Indhold • Inhoudsopgave • Sisukord • Sisällys • Table des matières • Inhaltsverzeichnis • Tartalomjegyzék • Tabel dari konten • Indice • 目次 • Мазмұны • Satura rādītājs • Turinys • Jadwal kandungan • Innholdsfortegnelse • Spis treści • Índice • Содержание • Índice • Innehållsförteckning • สารบัญ • İçindekiler • Muc lục

Table of contents	2
جدول المحتويات • 目录 • 目錄 • Obsah • Indhold • Inhoudsopgave • Sisukord • Sisällys • Table des matières • Inhaltsverzeichnis • Tartalomjegyzék • Tabel dari konten • Indice • 目次 • Мазмұны • Satura rādītājs • Turinys • Jadwal kandungan • Innholdsfortegnelse • Spis treści • Índice • Содержание • Índice • Innehållsförteckning • สารบัญ • İçindekiler • Muc lục	2
Safety information	4
تعليمات السلامة • 安全須知 • 安全資訊 • Informace o bezpečnosti • Sikkerhedsoplysninger • Veiligheidsinformatie • Ohutusterve • Turvallisuustiedot • Consignes de sécurité • Informationen zur Sicherheit • Biztonsági információk • Informasi keamanan • Informazioni sulla sicurezza • 安全情報 • Қауіпсіздік туралы ақпарат • Drošības informācija • Saugos informācija • Maklumat keselamatan • Sikkerhetsinformasjon • Informacje na temat bezpieczeństwa • Informações de segurança • Информация по соблюдению правил безопасности • Información sobre seguridad • Сәkerhetsinformation • ข้อมูลความปลอดภัย • Güvenlik bilgisi • Thông tin về an toàn	4
Box contents	6
محتويات الصندوق • 裝箱清單 • 盒裝內容 • Obsah balení • Kassens indhold • Inhoud van de doos • Karbi sisu • Pakkauksen sisältö • Contenu de la boîte • Lieferumfang • A doboz tartalma • Isi kotak • Contenuto della confezione • 製品同梱物 • Жыынтықтың құрамы • Kastes saturs • Langelio turinys • Kandungan kotak • Eskens innhold • Zawartość opakowania • Conteúdo da caixa • Содержимое упаковки • Contenido de la caja • Förpackningens innehåll • เนื้อหาในกล่อง • Kutu içeriği • Nội dung hộp thoại	6
Installation	8
التثبيت • 安裝 • 安裝 • Instalace • Installation • Installatie • Paigaldamine • Asennus • Installation • Installation • Telepítés • Instalasi • Installazione • 設置 • Орнату • Uzstādīšana • Montavimas • Pemasangan • Installasjon • Instalacja • Instalação • Установка • Instalación • Installation • การติดตั้ง • Kurulum • Lắp đặt	8
65" Interface	11
الواجهة • 界面 • 介面 • Rozhraní • Stik • Interface • Liides • Liittymä • Interface • Interface • Interfész • Antamuka • Interfaccia • インターフェイス • Интерфейс • Saskaarne • Saşaja • Antara muka • Grensesnitt • Interfejs • Interface • Интерфейс • Interfaz • Gränssnitt • อินเทอร์เฟซ • Arabirim • Giao diện	11

Set up

الإعداد • 设置 • 設定 • Nastavení • Konfiguration • Set-up • Paigaldamine • Käyttöönnotto • Configuration • Einrichtung • Telepítés • Konfigurasi • Configurazione • セットアップ • Батрай • Iestafīšana • Nustatymas • Tetapkan • Konfigurer • Konfiguracija • Configuração • Настройка • Instalación • Konfigurering • ติดตั้ง • Kurulum • Cài đặt

Install the latest firmware via ActivDriver from support.prometheanworld.com

تثبت أحدث البرامج عبر support.prometheanworld.com من ActivDriver

通过 **ActivDriver** 安装最新版固件，网址：www.prometheanplanet.com。

請至 support.prometheanworld.com 透過 **ActivDriver** 安裝最新韌體

Nainstalujte nejnovější firmware pomocí ovladače ActivDriver z webové stránky support.prometheanworld.com.

Installeer den nyeste firmware via ActivDriver fra support.prometheanworld.com

Installeer de nieuwste firmware via ActivDriver via support.prometheanworld.com

Installeer uusim püsivara ActivDriveri kaudu aadressilt support.prometheanworld.com

Asenna viimeisin laiteohjelma ActivDriverin kautta osoitteesta support.prometheanworld.com

Installez le dernier micrologiciel via ActivDriver depuis support.prometheanworld.com

Installieren Sie die aktuelle Firmware über ActivDriver von support.prometheanworld.com

A legújabb firmware az ActivDriver segítségével a support.prometheanworld.com webhelyről telepíthető

Pasang firmware terbaru melalui ActivDriver dari support.prometheanworld.com

Installare la versione firmware più recente tramite ActivDriver dal sito support.prometheanworld.com

support.prometheanworld.com から ActivDriver 経由で最新のファームウェアをインストールします

Микробагдарламаның соңғы нұсқасын ActivDriver арқылы support.prometheanworld.com сайтынан орнатыңыз

Instalējiet jaunāko programmatūru ar ActivDriver palīdzību no support.prometheanworld.com

Naudodamiesi „ActivDriver“, kurią galite pasisiųsti adresu support.prometheanworld.com, įdiekite naujausią programinę aparatūrinę įrangą.

Pasang perisian tegar melalui ActivDriver daripada support.prometheanworld.com

Installeer den nyeste fastvaren via ActivDriver fra support.prometheanworld.com

Zainstaluj najnowsze oprogramowanie układowe za pomocą programu ActivDriver w witrynie support.prometheanworld.com

Instale o firmware mais recente através do ActivDriver em support.prometheanworld.com

Установите последнее программное обеспечение при помощи ActivDriver с веб-сайта support.prometheanworld.com

Instale el firmware más reciente a través de ActivDriver desde support.prometheanworld.com

Installera den senaste inbyggda programvaran via ActivDriver från support.prometheanworld.com

ติดตั้งเฟิร์มแวร์ล่าสุดผ่าน ActivDriver จาก support.prometheanworld.com

Güncel ürün yazılımını ActivDriver ile support.prometheanworld.com sayfasından yükleyin

Cài đặt phần mềm firmware mới nhất bằng ActivDriver từ support.prometheanworld.com

words

process

assets

- ① **less text**
- ② **more images**
- ③ **fewer docs**

words

↓ **word count**

↓ **$t9n$ cost**

↑ **process complexity**

the brief

*“cut cycle time for multi-lingual
documentation by 50%”*

manual tasks

copy / paste

dtp of lang. versions

~~manual tasks~~

↓ **time** | ↑ **quality**

improve the source

structured layout

eliminate dtp
same rules for all langs.

Promethean

ActivPanel™ i-Series

Quick Install Guide

دليل التثبيت السريع

快速安装指南

快速安装指南

Příručka rychlé instalace

Installationsvejledning

Beknopte installatiegids

Kiirpaigaldusjuhend

Pika-asennusopas

Guide d'installation rapide

Schnellinstallationsanleitung

Gyors telepítési ismertető

Panduan Pemasangan Cepat

Guida di installazione rapida

クイック設置ガイド

Жылдам орнату нұсқаулығы

Ātrās instalēšanas rokasgrāmata

Spartaus diegimo vadovas

Panduan Pemasangan Pantas

Hurtigstartveiledning

Instrukcja szybkiej instalacji

Manual de instalação rápida

Руководство по быстрой установке

Guía de instalación rápida

Snabbinstallationsguide

คู่มือการติดตั้งอย่างรวดเร็ว

Hızlı Kurulum Kılavuzu

Hướng dẫn lắp đặt nhanh

TP-2038-ML-V04

- **product name**
- **document name**
- **languages**
- **document id**

modular content

blocks fit into layout

translate blocks

reuse content

style  **content**

style applied by rules

e.g. css

Set up

الإعداد • 設置 • 設定 • Nastavení • Konfiguration • Set-up • Paigaldamine • Käyttöönotto • Configuration • Einrichtung • Telepítés • Konfigurasi • Configurazione • セットアップ • Banray • Įstatymas • Nustatymas • Tetapkan • Konfigurer • Konfiguracja • Configuração • Настройка • Instalación • Konfigurering • ติดตั้ง • Kurulum • Cài đặt

Install the latest firmware via ActivDriver from support.prometheanworld.com

تتحدث البرامج عبر ActivDriver من support.prometheanworld.com

通过 ActivDriver 安装最新版固件，网址：www.prometheanplanet.com。

請至 support.prometheanworld.com 透過 ActivDriver 安裝最新韌體

Nains talujte nejnovejší firmware pomocí ovladače ActivDriver z webové stránky support.prometheanworld.com.

Installeer den nyeste firmware via ActivDriver fra support.prometheanworld.com

Installeer de nieuwste firmware via ActivDriver via support.prometheanworld.com

Installige uusim püsivara ActivDriveri kaudu aadressilt support.prometheanworld.com

Asenna viimeisin laiteohjelma ActivDriverin kautta osoitteesta support.prometheanworld.com

Installez le dernier micrologiciel via ActivDriver depuis support.prometheanworld.com

Installieren Sie die aktuelle Firmware über ActivDriver von support.prometheanworld.com

A legújabb firmware az ActivDriver segítségével a support.prometheanworld.com webhelyről telepíthető

Pasang firmware terbaru melalui ActivDriver dari support.prometheanworld.com

Installare la versione firmware più recente tramite ActivDriver dal sito support.prometheanworld.com

support.prometheanworld.com から ActivDriver 経由で最新のファームウェアをインストールします

Микробағдарламаның соңғы нұсқасын ActivDriver арқылы support.prometheanworld.com сайтынан орнатыңыз

Instalējiet jaunāko programmatūru ar ActivDriver palīdzību no support.prometheanworld.com

Naudodamiesi „ActivDriver“, kurią galite parsisiųsti adresu support.prometheanworld.com, įdiekite naujausią programinę aparatinę įrangą.

Pasang perisian tegar melalui ActivDriver daripada support.prometheanworld.com

Installeer den nyeste fastvaren via ActivDriver fra support.prometheanworld.com

Zainstaluj najnowsze oprogramowanie układowe za pomocą programu ActivDriver w witrynie support.prometheanworld.com

Instale o firmware mais recente através do ActivDriver em support.prometheanworld.com

Установите последнее программное обеспечение при помощи ActivDriver с веб-сайта support.prometheanworld.com

Instale el firmware más reciente a través de ActivDriver desde support.prometheanworld.com

Installera den senaste inbyggda programvaran via ActivDriver från support.prometheanworld.com

ติดตั้งเฟิร์มแวร์ล่าสุดผ่าน ActivDriver จาก support.prometheanworld.com

Güncel ürün yazılımını ActivDriver ile support.prometheanworld.com sayfasından yükleyin

Cài đặt phần mềm firmware mới nhất bằng ActivDriver từ support.prometheanworld.com

- right-to-left languages
- specialised fonts

tool chain

manage modular content

t9n workf bw

MADWORLD

DUBLIN, IRELAND

OCTOBER 8-11, 2019 | THE MARKER HOTEL

TRACK 1



28 Languages and Counting – How to Create Multilingual Documentation in MadCap Flare

Presented by: Duncan Smith, Chris Burden

In this case study session, Duncan Smith and Chris Burden shares the process of implementing MadCap Flare as the standard for creating publishing multilingual documentation. Learn how the 3di helped a company providing interactive education technologies grow from using Adobe InDesign to build their product installation and user guides in 28 languages to a solution that met the needs of multilingual content in print-based content. Discover how the 3di team set up multilingual documents in Flare with snippets, allowing translated text to automatically be inserted into the project after translation. In addition, Duncan and Chris discuss how 3di utilized the modular reuse capability of the Flare tool suite to improve efficiency and cut the time it takes to create and update multilingual guides.

SESSION TOPICS: MadCap Flare | Case Study | Translation

automate

when source (input) optimised
↓ errors | ↓ time | ↑ frequency



*“S**t in,
s**t out.”*

anon

words

process

assets

① **less text**

② **more images**

③ **fewer docs**

④ **structured layout**

⑤ **modular content**

⑥ **style & content**

⑦ **tool chain**

⑧ **automate**

process

**improve the source
simplify the processing**

↓ time | ↑ quality



10 weeks to <5 weeks

↑ throughput

can we do more

translation

decisions made each round

stored in tm / mt

↑ quality | ↑ frequency

terminology

**define key terms - globally
stored in database**

↓ time | ↑ quality

assets

**time invested in creating
need to be managed**

↑ throughput | ↑ quality

words

process

assets

① **less text**

② **more images**

③ **fewer docs**

④ **structured layout**

⑤ **modular content**

⑥ **style & content**

⑦ **tool chain**

⑧ **automate**

⑨ **translation quality**

⑩ **terminology**



- **focus on word count**
less to translate but introduces complexity
↓ cost | ↑ time | ↓ quality
- **focus on process**
improve source to reduce manual work
↓ time | ↑ quality | ↑ throughput
- **focus on assets**
?
↓ time | ↑ quality